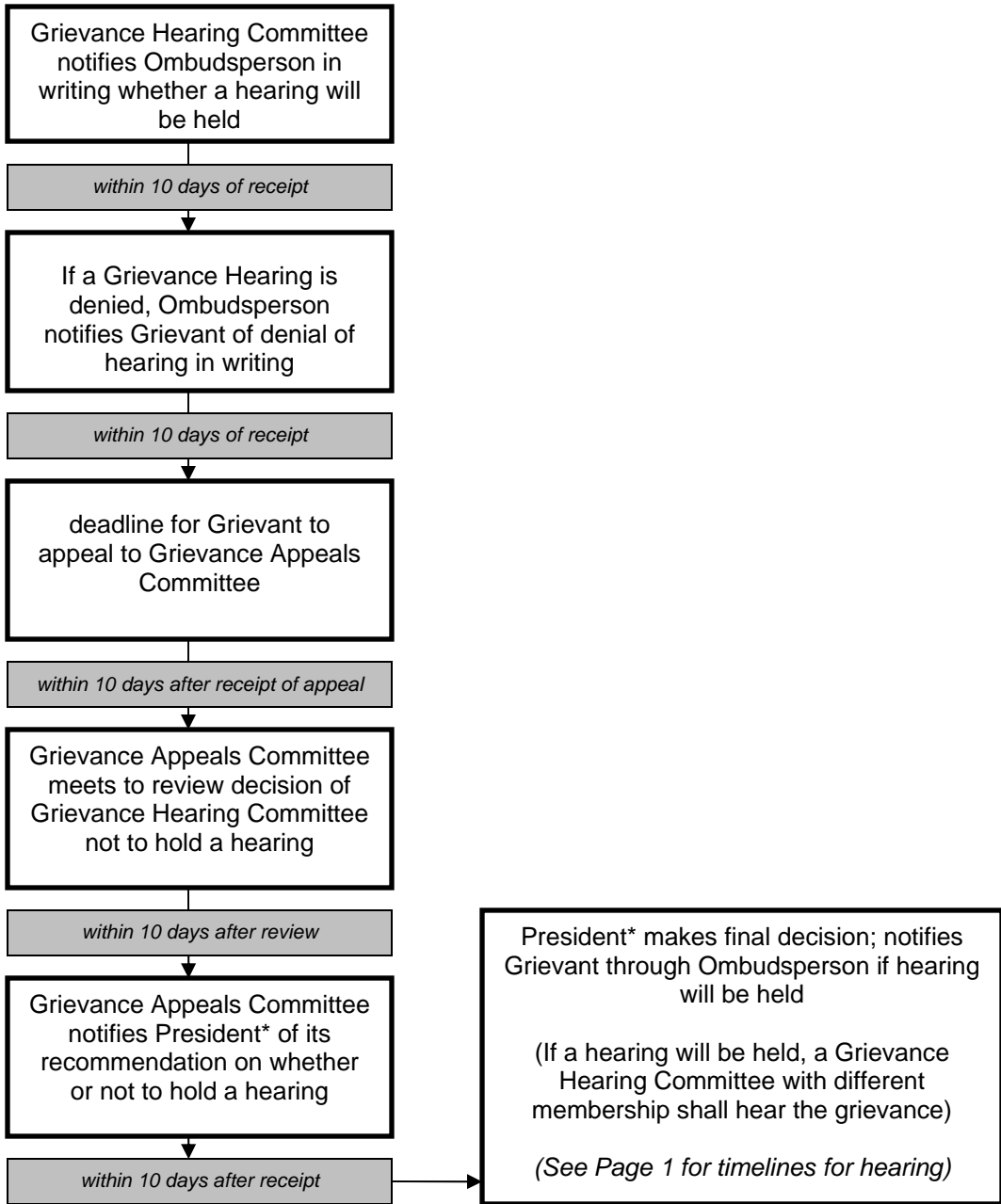


**ADMIN. REG. E-55
FLOWCHART**

**Page 1 of 2
HEARING GRANTED**

All days indicated in instructional days, unless otherwise noted.

* Chancellor to assume duties if President is a party to the grievance



**ADMIN. REG. E-55
FLOWCHART**

**Page 2 of 2
HEARING DENIED**

All days indicated in instructional days, unless otherwise noted.

* Chancellor to assume duties if President is a party to the grievance